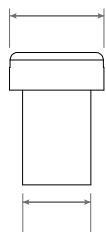


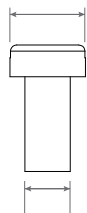
## DCL-PAR128 Instructions

Ø 1.25 mm



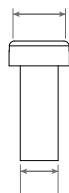
Ø 0.9 mm

Ø 1.0 mm



Ø 0.6 mm

Ø 0.8 mm



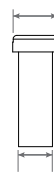
Ø 0.5 mm

Ø 0.7 mm



Ø 0.5 mm

Ø 0.6 mm



Ø 0.45 mm

Ø 0.5 mm



Ø 0.4 mm

Paints required:



**STEEL**

(N5-C054 by Number Five)

**NOTE:**



This parts faithfully reproduce the head but lack the threads, they are not real screws.